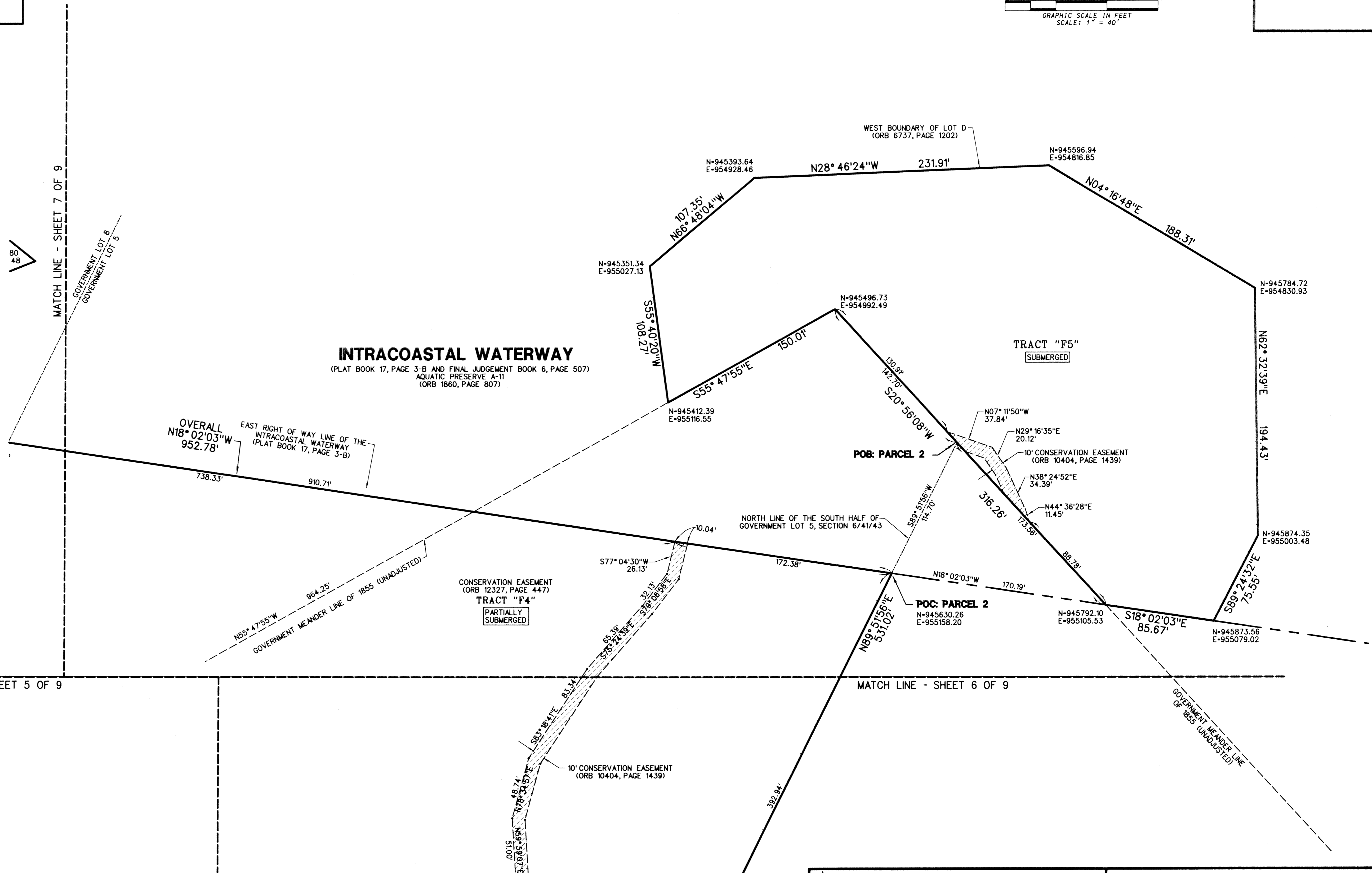
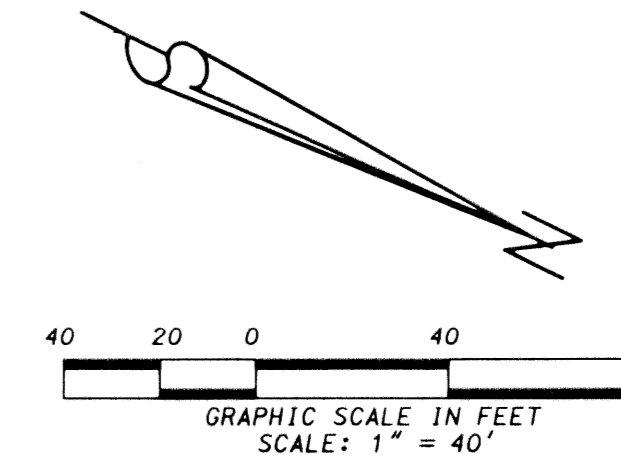
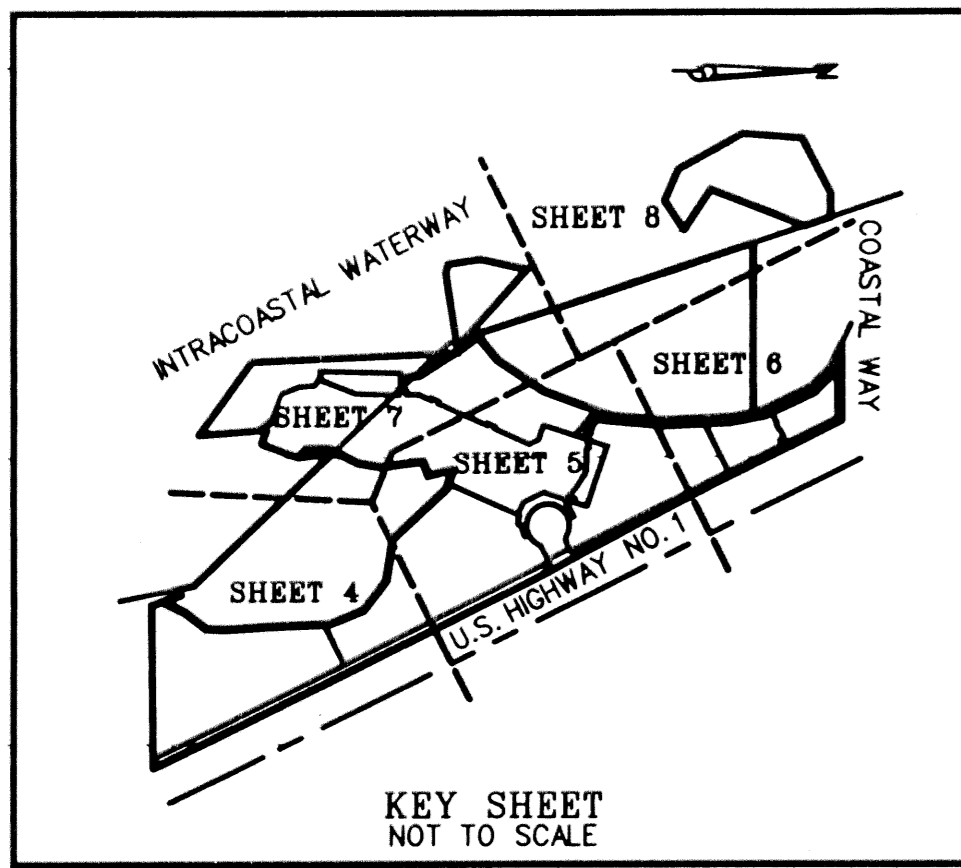


# JUPITER YACHT CLUB

BEING A PORTION OF SECTION 6, TOWNSHIP 41 SOUTH, RANGE 43 EAST,  
TOWN OF JUPITER, PALM BEACH COUNTY, FLORIDA

FEBRUARY, 2002

SHEET 8 OF 9



### LEGEND:

- = LIMITS OF PUBLIC ACCESS EASEMENT  
MAIN ENTRY CIRCLE  
PER ORB 13460, PAGE 1286  
SEE SHEET 2 FOR DETAIL
- = 10.00' CONSERVATION EASEMENT  
PER ORB 10404, PAGE 1439

### ABBREVIATIONS:

- FND = FOUND
- FPL = FLORIDA POWER & LIGHT
- NTS = NOT TO SCALE
- ORB = OFFICIAL RECORD BOOK
- PB = PALM BEACH
- POB = POINT OF BEGINNING
- POC = POINT OF COMMENCEMENT
- RB = RADIAL BEARING
- SRD = STATE ROAD DEPARTMENT
- SF = SQUARE FEET
- TL = TIE LINE

**LIDBERG LAND SURVEYING, INC.**  
 675 West Indiantown Road, Suite 200,  
 Jupiter, Florida 33458 TEL. 561-746-8454

CAD: K:\UST \ 064143 \ JYCMG01 \ 2717306 \ SHEET8.DGN			
REF: K:\UST \ 064143 \ JYCMG01 \ 2717306 \ 2717306.DGN			
FLD.	FB.	PG.	JOB 97-271-306
OFF. R.W.			DATE 10-04-01
CKD. D.C.L.	SHEET 8	OF 9	DWG. D97-271P